

# KOSTER INDUSTRIES ONLINE ONLY AUCTION

AUCTIONEERS • APPRAISERS • LIQUIDATORS

## COMPLETE MACHINE SHOP & 2012 WATER JET SYSTEM

48 Allen Blvd., Unit B, Farmingdale, New York 11735

**FEATURING:** 2012 8' x 13' Jet Edge Water Jet System • Lathes – Up to 24" Swing • Bridgeport Mills & CNC Profiler • Grinding • Hone • Saws • Large Quantity of Shop Support & Tool Crib • Inspection/Quality Control • Raw Material • Plus Much More!



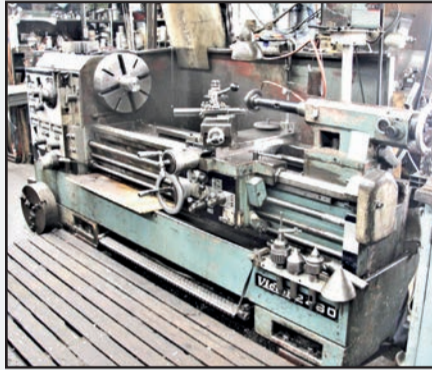
8' x 13' Jet Edge with IP-6050 Intensifier



21" x 100" Clausing Colchester Lathe



17" x 80" Turnmaster Gap Bed Lathe



24" x 60" Victor Gap Bed Lathe



Bridgeport "Series I" CNC Knee-Type Mill with Bandit III Controls



Sunnen MBB-1600 Hone



P&W CNC Profiler with Bridgeport Vari-Speed Head and Mach III CNC Control

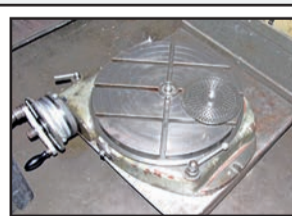


Miller "Syncrowave 351" AC/DC Welder

**2012 WATER JET SYSTEM:** 8' x 13' Jet Edge with IP-6050 Intensifier, 60,000 PSI, 50HP, Beckhoff CNC control, EBBCO abrasive removal system, extra garret, approx. 3,707 hours, S/N: 24516 (2012) • **LATHES:** 24" x 60" Victor Gap Bed Lathe, approx. 33" swing thru gap, 12-spindle speeds, inch/mm, 21–1,500 RPM, camloc spindle, steady rest, Acu-Rite III digital readout, S/N: 98052; 21" x 100" Clausing Colchester Lathe, 16-spindle speeds, 18–1,400 RPM, camloc spindle, 3-1/2" hole thru spindle, inch/mm threading, steady rest; 17" x 80" Turnmaster Gap Bed Lathe, approx. 24" thru gap, inch/mm, 16-spindle speeds, 20–1,600 RPM, camloc spindle, 3" spindle bore, steady rest, 4-jaw and 3-jaw chucks, Mitutoyo digital readout, S/N: 18800106; 17" x 60" Graziano "SAG 17" Lathe, 12-spindle speeds, 40–1,500 RPM, camloc spindle, inch/mm, steady rest, 4-jaw chuck, 22" swing thru built-in gap; 14" x 40" Graziano "Sag-14" Lathe, inch/mm, 12-spindle speeds, 40–1,500 RPM, camloc spindle, 19" swing thru built-in gap; 12" x 30" Gallin Mdl. 3601 Lathe, inch/mm, 8-spindle speeds, 105–2,000 RPM, camloc spindle • **KNEE TYPE MILLING MACHINES – Incl., CNC:** Bridgeport "Series I" CNC Vertical Knee-Type Mill, with Bandit III controls, quick change spindle, 3-axis, 9" x 42" table; Bridgeport 1-1/2HP Vari-Speed Vertical Mill; (2) Bridgeport 1HP Vertical Mills, 9" x 42" table, 8-spindle speeds, R8 spindle, 80–2,720 spindle RPM, S/N's: 12BR-58400, 12BR-199280; Bridgeport 1HP Vertical Mill, 9" x 42" table, 7" riser block, 8-spindle speeds, R8 spindle, 80–2,720 spindle RPM, S/N: 12BR-89785; **Excello Mdl. 602** Vertical Mill, vari-speed, 1-1/2HP motor, SCR power feed on table, 9" x 42" table, S/N: 662-210105 • **CNC PROFILER & MILLER:** Pratt & Whitney CNC Vertical Miller and Profiler, 29-1/2" x 35" T-slotted table, Mach III CNC retrofit control, Bridgeport 1-1/2HP vari-speed head, 18" under rail, 42" between housing, 12" Yuasa CNC rotary table, S/N: 550-052 • **GRINDERS – ALL TYPES:** 12" x 27-1/2" Blohm "Simplex 7" Automatic Surface Grinder, over-the-wheel dresser, permanent magnetic chuck, neurofrier, coolant, Finimatic control, S/N: 1892; 6" x 12" Boyar Schultz Hand Feed Surface Grinder, 3/4HP; 10-1/2" x 30" Grisetti Mdl. 800 Universal Cylindrical Grinder, motorized vari-speed, work head, S/N: 275 (1966); 4" x 15" Van Norman RE-LI-O OD Cylindrical Grinder, swivel motorized work head, 1/3HP • **HONE:** Sunnen Mdl. MBB1600 Hone, 1/2HP motor, S/N: 43642 • **ALSO:** Assorted Mandrels and Stones • **SAWS:** Baleigh CS-275EX Mitre Cold Saw, 1.5HP, S/N: C71111026; 24" Grob Vertical Bandsaw; 8" x 14" Kalamazoo Horizontal Bandsaw • **BRAKE & PRESSES:** 4' x 11-Ton Chicago Mdl. 131 Mechanical Press Brake, bottom rail adjustment, vari-speed, S/N: LW-8423; 50-Ton Dake Mdl. 50H H-Frame Hydraulic Shop Press, 33" between housing, manual lever, adjustable lower rail, S/N: 157312; Benchmaster 3-Ton OBI Flywheel Type Punch Press, S/N: 74619838 • **MISCELLANEOUS MACHINERY & EQUIPMENT:** 1-Ton Abell-Howe Floor Mounted Jib Arm, 10' approx., 1-ton chain block; Patterson-Kelly 3/4HP Twin Shell Dry Blender; 6" Belt and 12" Disc HDT Mdl. SB-6X12 Combination Sander; 1" Belt x 8" Disc Mdl. H8192 Combination Sander, 1/3HP, single phase, (2018); Cantilever Stock Rack, 72"W. x 120"H., 36" arms, adjustable arms; 20" Dia. Vibratory Finisher; Double End Grinders and Carbide Grinders; Filematic Mdl. FIL-50 Threading Unit, 600 RPM threading; Duplomatic TA-120 Tracing Attachment; Arbor Presses, 20 KVA Alphil Mdl. VPTF Spot Welder, 12" throat; C-Frame Punch, 11-1/2" throat • **INSPECTION & QUALITY CONTROL:** 13" Mitutoyo PH-350 Comparator, surface illumination, 5-7/8" x 15-3/4" table, Mitutoyo 2-axis readout, S/N: 10547; 14" Tumico Optical Comparator; Misawa Seiki Hardness Tester, S/N: 72527 • **ALSO AVAILABLE:** Rockwell Mdl. 300R Hardness Tester, S/N: 608; Miscellaneous Incl. Scherr Tumico and Mitutoyo Calipers Up to 60"; Assorted Height Gauges; Brown & Sharpe 5851-12 "Hiteicator"; Cadillac Gauges, Pin Gauge Sets, Jo-Blocks, Micrometers, Granite Surface Plates, Bore Gauges, ID Bore Gauges, Verniers, Surface Testers, Plus Much More! **MISCELLANEOUS TOOL CRIB & SHOP SUPPORT:** Spacers, Dividing Heads, 10" Gorton Rotary Table, 12" Troyke Rotary Table, Kurt Vises, Air-Mic, Scales, Presto Die-Lift Cart, 6" x 6" T-slotted X-Y Table, Drill Presses, 8" TST Vertical/Horizontal Rotary Table, Dumore 44-011 Toolpost Grinder, Bronze Bushings, Hout Drill Boxes, Angle Plates, Bridgeport Right Angle Heads, Bridgeport Quill Attachment, 5C Collets, R8 Collets, Bench Vises, Tilting T-slotted Tables, Bridgeport Boring Heads, Milling Vises, Drills, Taps, Reamers, Keyway Cutters, Broaches, Tapping Heads, Kuroda UFB-35 Boring Head, End Mills, Scissor Clamps, Aloris Toolposts, Boring Bars, Live Lathe Centers, Jacobs Speed Chucks, Steinel "PK" Hand Press, Flex Collets, Lathe Chucks, Swivel Vises, Cabinets, Tables, Rolling Carts, **PLUS MUCH MORE! HUNDREDS OF LOTS!**



Partial View of Material



Partial View of Tooling and Accessories



VISIT OUR WEBSITE FOR PHOTOS AND TERMS OF SALE

To Register For This Auction, Please Visit [www.kosterindustries.com](http://www.kosterindustries.com)

**ONLINE AUCTION ENDS: Tuesday, August 25, 2020 Starting at 1:00 p.m. EDT**

ONE DAY ONSITE INSPECTION: Monday, August 24 from 9:00 a.m. to 4:00 p.m.

Sale Under Management:

**KOSTER INDUSTRIES**  
AUCTIONEERS • APPRAISERS • LIQUIDATORS  
e-mail: [info@kosterindustries.com](mailto:info@kosterindustries.com)  
[www.kosterindustries.com](http://www.kosterindustries.com)

Corporate Office:  
40 Daniel Street, Ste 2,  
Farmingdale, NY 11735  
631-454-1766  
Fax: 631-454-1779



Sale Held in Conjunction With:



Online Bidding Through



35 Pinelawn Road, Melville, NY 11747  
[Sales@prestigeequipment.com](mailto:Sales@prestigeequipment.com)  
631-249-5566