

# KOSTER INDUSTRIES ONLINE ONLY AUCTION

AUCTIONEERS • APPRAISERS • LIQUIDATORS

Surplus to the Ongoing Needs of:

## Multiple GE Facilities

Houston, Texas – Ft. Worth, Texas – Broussard, Louisiana  
Erie, Pennsylvania – New Mexico – Richmond, Virginia



84" Giddings & Lewis CNC Vertical Boring Mill

### TEXAS, LOUISIANA & NEW MEXICO LOCATIONS

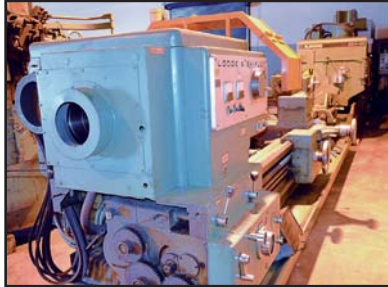
#### VERTICAL TURNING

84" Giddings & Lewis CNC Vertical Boring Mill, with Siemens 840D CNC controls, S/N: 515-0009-79

Bullard Cutmaster 42" Vertical Turret Lathe, with turret head, ram head, side head, pendant controls, 4.1-150 RPM table speeds (no jaws), S/N: 28467 (1953)



Bullard Cutmaster 42" Vertical Turret Lathe



Lodge & Shipley Mdl. 2XE-3220-WHD 34" x 120" Geared Head Engine Lathe



Blanchard Mdl. 220-42 Rotary Surface Grinder



Haas Mdl. HS-1 CNC Horizontal Machining Center



Clausing Mdl. 8056 17" x 110" Geared Head Engine Lathes

1 OF 2



Bennett Type CG14 Rotary Grinder



H&H 200-KVA Press Type Spot Welder



BHS-Torin Mdl. 11 CNC Programmable Spring Coiler



Fulton Mdl. VMP-130LE Boiler

### ERIE, PENNSYLVANIA

#### CNC VERTICAL TURN MILL

Monarch Mdl. TM1250 TAJMAC/ZPS CNC Turn Mill Vertical Turning Lathe, with Siemens Sinumerik control, 4-jaw chuck, 40" x 40" pallet, Technimet-CZ chip conveyor, 45-position automatic tool changer, Capto C8 tools, 8-position head changer, 55" X-axis, 59" Y-axis, 49.2" Z-axis, clamping surface dia. 49.2", 6,500 RPM, max. number tool heads 10, Rittal chiller, S/N: 08ZP301

#### TOOL SETTERS

Parlec Type IS6 3200-WK Thermogrip Tool Setter, 85-150 PSI, S/N: 0187 (New 2007)

#### DEBURRING UNIT

Ernst Titan Type 1400 Deburring Unit, 55" wider, S/N: 800058 (2011)

#### LAB EQUIPMENT

Instron Mdl. 3367 Tensile Tester, 30kn capacity, 135kg weight (2013) (System ID: 3367U2090)

Instron Mdl. E3000 Electro-Plus Fatigue Tester

MSX Mdl. 300R Type 300R1 Abrasive Cutoff Saw, 460v, S/N: 60012 (2003)

Struers Mdl. SECOTOM-50 Digital Abrasive Cutoff Saw, approximately 6" dia.

Leica "Metalgraph" Microscope, with Clemex digital analysis (2015)

Wilson Mdl. VH3100 Hardness Tester, S/N: 733804142 (2014)

Perkin Elmer Mdl. TGA4000 Thermogravimetric Analyzer

Struers Mdl. LECTROPOL-5 Electro Polisher

17% BUYER'S PREMIUM WILL APPLY



Monarch Mdl. TM1250 TAJMAC/ZPS CNC Turn Mill Vertical Turning Lathe



Leica "Metalgraph" Microscope



Wilson Mdl. VH3100 Hardness Tester



Parlec Type IS6 3200-WK Thermogrip Tool Setter



Instron Mdl. 3367 Tensile Tester



Instron Mdl. E3000 Electro-Plus Fatigue Tester



MSX Mdl. 300R Type 300R1 Abrasive Cutoff Saw



Ransome Mdl. 250P-A Welding Positioner

#### WELDING & RELATED

Ransome Mdl. 250P-A Welding Positioner, 25,000 capacity, 60" x 60" with 84" sub-table, S/N: 6526215 (1980)

ALSO: TORQUE GUNS • MISC. LAB • ETC.

FEATURING: CNC VERTICAL TURNING LATHES • ROTARY GRINDERS  
CNC HORIZ. MACHINING CENTERS  
WELDERS • LAB EQUIP. • & MORE!

#### LATHES

Lodge & Shipley Mdl. 2XE-3220-WHD 34" x 120" Geared Head Engine Lathe, with 28" swing over cross slide, 28" dia. 4-jaw chuck, threading attachment, steady rest, Acu-Rite III 2-axis digital readout, 7" hole thru spindle, spindle speeds variable to 900 RPM, S/N: 50326 (1979)

(2) Clausing Mdl. 8056 17" x 110" Geared Head Engine Lathes, with 20-1,600 RPM spindle speeds, inch/metric threading (no chuck), S/N's: 7/0222/13192; 770/222/11814

#### ROTARY GRINDERS

Blanchard Mdl. 220-42 Rotary Surface Grinder, with pendant controls, 720 RPM wheel, Neutrofler II, S/N: 15493 (1982)

Bennett Type CG14 Rotary Grinder, with 30" dia., 1,120 RPM grinding wheel speed, DCE Unimaster Mdl. UMA25ZG5AD dust collector (S/N: 93-1017)

#### CNC HORIZONTAL MACHINING CENTER

Haas Mdl. HS-1 CNC Horizontal Machining Center, with Haas CNC controls, 710 IPM brushless servo, 16" x 16" dual pallet (missing pallets), 24-position automatic tool changer, 20HP vector drive, S/N: 542-0031-34 (1998)

#### SPRING COILER

BHS-Torin Mdl. 11 CNC Programmable Spring Coiler, with hydraulic pump, coiler, Daisy Data controls, wire dia. range .015-.072, coil OD range .093-1.750, pitch tool movement .875 max., Acra wire controls feed unit

#### HORIZONTAL BORING MILL

Giddings & Lewis 5" Horizontal Boring Mill, table type, with 48" x 98" table, outriggers, 78" vertical travel, 120" bed length, 7.5-975 RPM spindle speeds, standard 7.5-467/high range 480-975, S/N: 150-1141-71

#### WELDERS

H&H 200-KVA Press Type Spot Welder, 350-amp, 480v, 1PH with chiller, S/N: H5988 (2012)

Tecna Mdl. 3032A 53-KVA Portable Spot Welder, 440v/3ph, S/N: 008277 (2012)

#### BOILER

Fulton Mdl. VMP-130LE Boiler, 130HP, 4485/hr. steam, 4.353 MMBTUCH, complete with feedwater tank system, blowdown tank, S/N: F1018017A (2016)

ALSO: MILLING MACHINES • SHOT PEEN • OVEN • PRESSES  
• INSPECTION • GRINDERS • SANDERS • AIR CLEANERS • ETC.

VISIT OUR WEBSITE FOR COMPLETE PHOTOS, INFORMATION & TERMS OF SALE

To Register For This Auction, Please Visit [www.kosterindustries.com](http://www.kosterindustries.com)

ONLINE BIDDING ENDS: Thursday, March 15th, 2018 at 2:00 p.m. EDT

INSPECTION: By Appointment Only – Contact Koster Industries Inc.

Sale Presented By:

**KOSTER INDUSTRIES**  
AUCTIONEERS • APPRAISERS • LIQUIDATORS

Corporate Office:  
40 Daniel Street, Ste 2  
Farmingdale, NY 11735  
631-454-1766  
Fax: 631-454-1779

[www.kosterindustries.com](http://www.kosterindustries.com) • e-mail: [info@kosterindustries.com](mailto:info@kosterindustries.com)



Under Management of:



GE Capital  
Jim Hanley, Equipment Remarketing Services  
83 Wooster Heights Rd., Danbury, CT 06810  
P. 203-546-4491 E: [jim.hanley@ge.com](mailto:jim.hanley@ge.com)

Online Bidding Through [gewarehouse.com](http://gewarehouse.com)

Russell M. Koster, TX Lic. 11005  
Koster Industries Inc., LA Lic. AB-184  
Randall G. Koster, PA Lic. AU002649L