



**WELL KNOWN MACHINE BUILDER
EDGEWATER MACHINE COMPANY, INC.**

13-20 131st Street, College Point (Queens), New York 11356

AUCTION HIGHLIGHTS: VERTICAL MACHINING CENTERS: 2002 Hurco VMX64/50T and VMX42, Hurco BMC-20 • CNC LATHE: Ikegai TU26 • (10) LATHES: up to 160"cc • (12) MILLING MACHINES: Bridgeport Vari-Speeds and K&Ts • PLANER MILL: 40" x 120" Cincinnati • ROTARY GRINDER: 36" Blanchard 20-36 • PRESS BRAKE: DiAcro/Promecam RG-35-20 • SHEAR: 10Ga. x 52" Wysong • DRILLS: 4' Radial Drill and Burgmasters; (11) SAWS – Incl. DoAlls, Kalamazoo, Wilton • FORKLIFTS: 2010 8,000-Lb. & 6,000-Lb. Toyotas • AIR COMPRESSORS – Plus Much More!



Hurco Mdl. VMX64/50T CNC Vertical Machining Center



Hurco Mdl. VMX42 CNC Vertical Machining Center



20" x 160"
Summit
Gap Bed
Lathe



Blanchard
No. 20-36
36" Rotary
Surface
Grinder

To Register For This Auction & Terms of Sale, Please Visit www.kosterindustries.com

ONLINE BIDDING ENDS: Tuesday, July 25th, 2017 at 1:00 p.m.

ONE-DAY ONSITE INSPECTION: Monday, July 24th from 8:00 a.m. to 4:00 p.m.

CNC VERTICAL MACHINING CENTERS

Hurco Mdl. VMX64/50T CNC Vertical Machining Center, with Ultimax split screen controls, 35" x 66" table, 32-position automatic tool changer, chip conveyor, 50 taper, Renishaw probe, S/N: H-65007 (2002), low hours 656, M653-06002082CFA

Hurco Mdl. VMX42 CNC Vertical Machining Center, with Ultimax dual screen controls, 24" x 50" table, 24-position automatic tool changer, chip conveyor, 40 taper, Renishaw probe, S/N: H-420032 (2002), low hours 399, M422-06007082CFA

Hurco Mdl. BMC-20 CNC Vertical Machining Center, with 13.5" x 30" table, Ultimax dual screen CNC controls, 16-position automatic tool changer, S/N: BJ-8010079A

ALSO: Haas 4th Axis Indexer, Haas servo controls.

CNC LATHE

Ikegai Mdl. TU26 CNC Turning Center, with Fanuc 18-T controls, 10" dia. 3-jaw chuck, 12-position turret, hydraulic tailstock, chip conveyor, S/N: T3518F19 (1997)



18" x 80" Southbend Turn-Nado EVS Gap Bed Lathe



14" x 40" Jet Mdl. 1440-3PGH Gap Bed Lathe



Ikegai Mdl. TU26 CNC Turning Center

MILLING MACHINES

Bridgeport Series I 2HP Vertical Milling Machine, with 9" x 48" power feed table, Mitutoyo 2-axis digital readout, spindle speeds 60–4,200 RPM, S/N: 225988

Bridgeport Series I 2HP Vertical Milling Machine, with 9" x 36" table, spindle speeds 60–4,200 RPM, 3-axis digital readout, S/N: 235651

(4) Bridgeport Series 2J Vertical Milling Machines, with 9" x 42" power feed table, spindle speeds 60–4,200 RPM, S/N's: 163173; 172159; 128229; 172937

(4) Bridgeport Series 1J Vertical Milling Machines, with 9" x 42" table, spindle speeds 80–2,720 RPM, shaping attachment, S/N's: 39126; 79519; 66747; 103758

Bridgeport Series 1J Vertical Milling Machine, with 9" x 32" table, spindle speeds 80–2,720 RPM, S/N: 54780

Milwaukee Mdl. 1H-12 Horizontal Milling Machine, S/N: 27-5580

Milwaukee Mdl. 1H-18 Horizontal Milling Machine, S/N: 24-2954



Bridgeport Series I 2HP Vertical Milling Machine

PLANER MILL

Cincinnati Planer Mill, with 40" x 210" table, approximately 48" distance between uprights, spindle speeds 50–3,000 RPM, (2) side heads, (1) rail head

GRINDERS & SANDERS

Blanchard No. 20-36 36" Rotary Surface Grinder, with solid grinding wheel, S/N: 12311

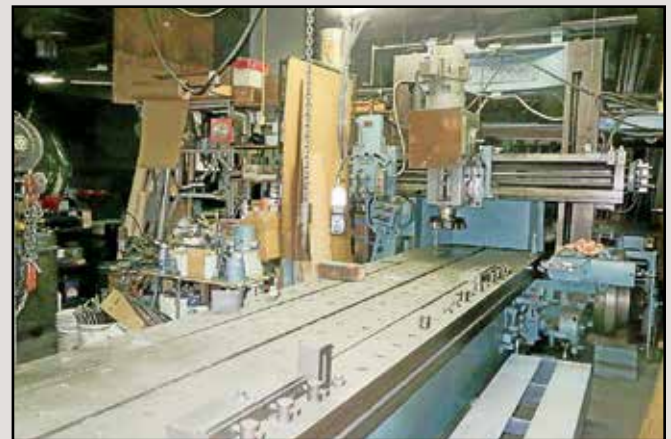
Darex 1/3HP Drill Sharpener, S/N: 53521

K.O. Lee Mdl. S718HA Hand-Feed Surface Grinder, with 6" x 18" magnetic chuck, S/N: 1588

4" Wide x 4' Stroke Sander

4" Wide x 5' Stroke Sander

ALSO AVAILABLE: Large Quantity of Double-End Pedestal Grinders and Drill Grinders



Cincinnati Planer Mill

DRILLS

(2) A/Z-Metal Type AB3 Mdl. ESV Floor-Type Drill Presses, with spindle speeds 160–1,400 RPM, S/N's: 10967; 7316

Arboga Type GM3512 Heavy-Duty Drill, with 20" x 24" table, spindle speeds 70–1,965 RPM, S/N: 238648

Kitchen & Wade Type 4" E26 Radial Drill, with spindle speeds 80–1,500 RPM, box table, S/N: 14386

Burgmaster 6-Spindle Turret Drill, S/N: B-1803

Burgmaster 6-Spindle Automatic Indexing Turret Drill, S/N: B-5916

ALSO AVAILABLE:

Large Quantity of Multi-Spindle and Single-Spindle Drills, Incl. Delta, Walker Turner, Clausing, Jet, etc.

LATHES

20" x 160" Summit Gap Bed Lathe, with inch/metric threading, spindle speeds 11.5–1,400 RPM, 4" hole, 12" dia. 3-jaw chuck, 6" gap, S/N: 500MT/4000/36052

24" x 110" Meuser Gap Bed Lathe, with spindle speeds 9–1,200 RPM, inch/metric threading, 7" gap, 3-jaw chuck, steady rest, S/N: 9088

18" x 80" Southbend Turn-Nado EVS Gap Bed Lathe, with inch/metric threading, 6" gap, approximately 3" hole, spindle speeds 18–1,800 RPM, inch/metric digital readout, 3-jaw chuck, S/N: 143CJ1869904250

18" x 72" LeBlond Quick Change Geared Lathe

17" x 40" Cincinnati Hydrashift Geared Head Engine Lathe, with 3-jaw chuck, spindle speeds 37–1,470 RPM, S/N: 550235V-0048

14" x 40" Jet Mdl. 1440-3PGH Gap Bed Lathe, with 6" gap, spindle speeds 40–1,600 RPM, 3-jaw chuck, Acu-Rite 2-axis digital readout, S/N: 8086B105

14" x 30" Lodge & Shipley Quick Change Geared Lathe, with spindle speeds 9–1,200 RPM, inch/metric threading, 7" gap, 3-jaw chuck, steady rest, S/N: 9088

13" x 36" Clausing Quick Change Geared Lathe, with 3-jaw chuck, spindle speeds 34–1,500 RPM, S/N: 3/39476

13" x 36" Clausing Lathe, with spindle speeds 40–1,800 RPM, collet chuck, S/N: F3/60397

13" x 36" Clausing Lathe, with spindle speeds 40–1,800 RPM, 3-jaw chuck, S/N: F3/50349





Wilton Mdl. 8127 28" Vertical Bandsaw

SAWS

DoAll Mdl. C-916 Horizontal Bandsaw, with approximately 5' roller conveyor, S/N: 527-001413

Wilton Mdl. 8127 28" Vertical Bandsaw, with digital readout, S/N: 200371002

36" DoAll Vertical Bandsaw

Kalamazoo Mdl. 7A-W Horizontal Bandsaw, S/N: 926

Roll-In Portable Vertical Bandsaw

16" DoAll Mdl. 16-3 Vertical Bandsaw, with butt welding and grinding attachment, S/N: 50-56445

WF Wells & Sons Horizontal Bandsaw

10" Emerson Portable Horizontal Bandsaw

Kalamazoo 10" Abrasive Cut-Off Saw

Kalamazoo Mdl. 9AW Portable Horizontal Bandsaw, S/N: 3785

18" Grob Mdl. NS18 Vertical Bandsaw, S/N: 2113

PRESSES

Approximately 20-Ton Capacity Hannifin Mdl. F-101/L316-C-63646 Press, with 5" dia. ram, S/N: C53646

Approximately 25-Ton Capacity Greenerd Press, S/N: H-61-AD

PRESS BRAKES

20-Ton x 79" Diacro Promecam Mdl. RG-35-20 Power Press Brake, upacting, with back gauge, S/N: 20-035/20-402 (1984)

12-Ton x 48" Bantam Mdl. B412 Press Brake, S/N: A8424



DoAll Mdl. C-916 Horizontal Bandsaw



6,000-Lb. Toyota Mdl. 7FGCU32 Propane Forklift Truck

2010

ONLY 72 HRS.

FORKLIFT TRUCKS

8,000-Lb. Toyota Mdl. 7FGKU40 Propane Forklift Truck, with 187" reach, 28.8 hours, pneumatic tires, triple mast, side shift, S/N: 61407 (2010), total usage 35 hours

6,000-Lb. Toyota Mdl. 7FGCU32 Propane Forklift Truck, with 159" reach, 72 hours, side shift, solid tires, S/N: 66078 (2010), total usage 72 hours

5,000-Lb. Yale Mdl. L83P-040-SBS-093 Propane Forklift Truck, with 168" max. reach, hydraulic tires, S/N: P194977

6,000-Lb. Baker Mdl. B-60-PD Diesel Forklift Truck, with hydraulic tires, S/N: 315-300-1307

5,000-Lb. Baker Mdl. B50-CG Diesel Forklift Truck, with solid tires, side shift, S/N: X-1971-61

CAM MILLERS

(3) Row Bottom Cam Millers, with True-Trace hydraulic power units, spindle speeds to 500 RPM

AIR COMPRESSORS

25HP Twistair Mdl. TA025TANIC Horizontal Tank Mounted Air Compressor, 125-PSIG, S/N: 112221

7.5HP Devilbiss Mdl. 44643 Tank Mounted Air Compressor, single-stage, S/N: B-77

5HP Twistair Mdl. TA-007BA111TG Tank Mounted Air Compressor, 125-PSIG, S/N: 211929

WOODWORKING

Milwaukee 3-1/4HP Panel Saw

10" Jet Table Saw, S/N: 6090893

DeWalt Mdl. GA Radial Arm Saw, with 14" blade, S/N: 310776

20" Delta Rockwell Mdl. 28-350 Vertical Bandsaw, S/N: 1375832



Wysong Mdl. 1052 10Ga. x 52" Power Squaring Shear

SHEAR

Wysong Mdl. 1052 10Ga. x 52" Power Squaring Shear, with front arm extensions, angle arm, back gauge, S/N: P52-418

WELDERS – Incl. Plasma



Thermal Arc Plasma Cutting Systems

Thermal Arc Mdl. PAK10-XR Plasma Cutting System

Thermal Arc Mdl. PAK-5XR Plasma Cutting System, S/N: N62201A-18321A

Miller Mdl. AEAD-200LE AC/DC Welding Generator, S/N: JF943433

Miller Mdl. CP-300 DC Arc Welder, with Miller wire feed, S/N: JH690620

Chemtron Mdl. AC-DCHF Welder

Miller Thunderbolt 225 AC Arc Welder

Miller 300-AMP DC Welder, with Millermatic 10A wire feed

Alphal Mdl. ARG 30-KVA Spot Welder, with weld timer, S/N: 6028

MISCELLANEOUS SHOP & CRIB, INCL.: Miscellaneous Drills, Taps, Reamers, CNC Tool Holders, Hydraulic Pallet Jacks, Scales, Shelving, Racking, Electric Chain Hoists, 2-Wheel Hand Trucks, Hose, Brake Dies, Jig Rig Forklift Attachment, Dollies, Long and Short Clamps, Electric and Pneumatic Hand Tools, Ladders, Saw Blades, Pneumatic Nail Guns, Tool Chests, Steel Layout Tables, Drill Chucks, Kurt Milling Vises, Work Benches and Vises, Shop Vacs, Shop Fans, Assorted Hardware, Extension Cords, V-Belts, Jacks, Heaters, Burning Gage and Torch Sets, Ridgid 400 Pipe Threading, Portable Enerpac Units, Shop Stools, Electrical Supplies, Wire, Chains, Lifting Straps, Hand Pipe Benders, Plate Clamps, 2-Door Steel Storage Cabinets, Hand Tools, PCs, Fax Machine, Desks, Chairs, File Cabinets, Shelving, Much, Much More.



Partial View of Raw Material

ONLINE BIDDING ENDS:
Tuesday,
July 25th, 2017
at 1:00 p.m.

ONE-DAY ONSITE INSPECTION:
Monday, July 24th from 8:00 a.m.
to 4:00 p.m.

To Register For This Auction & Terms of Sale, Please Visit www.kosterindustries.com



Hurco Mdl. BMC-20 CNC
Vertical Machining Center

WELL KNOWN MACHINE BUILDER EDGEWATER MACHINE COMPANY, INC. College Point (Queens), New York 11356

IMPORTANT NOTICE TO ALL BUYERS REGARDING AUCTION PAYMENT:

18% Buyers Premium will apply on all purchases. Company or personal checks will be accepted only if accompanied by a letter from the payor's bank guaranteeing unqualified payment to Koster Industries, Inc. All checks must be made payable to the order of Koster Industries, Inc. Direct bank wire transfers to the account of Koster Industries, Inc. on balances due will be accepted with prior arrangement. **No lot may be removed until complete settlement is made.**

IMPORTANT NOTICE: Although information has been obtained from sources deemed reliable, the auctioneer makes no warranty or guarantee, expressed or implied, as to the accuracy of the information herein contained. It is for this reason that buyers should avail themselves of the opportunity to make inspection prior to the sale. All equipment being sold as-is, where-is with no guarantees.



KOSTER INDUSTRIES

AUCTIONEERS • APPRAISERS • LIQUIDATORS

AUCTIONEERS • APPRAISERS • LIQUIDATORS
40 Daniel Street, Suite 2, Farmingdale, NY 11735
631-454-1766 • Fax: 631-454-1779

Presorted
First Class Mail
U.S. Postage
PAID
Eugene, Oregon
Permit No. 17



Diacro Promecam Mdl. RG-35-20
Power Press Brake

KOSTER INDUSTRIES

AUCTIONEERS • APPRAISERS • LIQUIDATORS

ONLINE
ONLY

AUCTION



WELL KNOWN MACHINE BUILDER EDGEWATER MACHINE COMPANY, INC.

13-20 131st Street, College Point (Queens), New York 11356



35
HRS.

8,000-Lb. Toyota Mdl. 7FGKU40
Propane Forklift Truck



20" x 160" Summit Gap Bed Lathe

AUCTION HIGHLIGHTS: VERTICAL MACHINING CENTERS: 2002 Hurco VMX64/50T and VMX42, Hurco BMC-20 • CNC LATHE: Ikegai TU26 • (10) LATHES: up to 160"cc • (12) MILLING MACHINES: Bridgeport Vari-Speeds and K&Ts • PLANER MILL: 40" x 120" Cincinnati • ROTARY GRINDER: 36" Blanchard 20-36 • PRESS BRAKE: DiAcro/Promecam RG-35-20 • SHEAR: 10Ga. x 52" Wysong • DRILLS: 4' Radial Drill and Burgmasters; (11) SAWS – Incl. DoAlls, Kalamazoo, Wilton • FORKLIFTS: 2010 8,000-Lb. & 6,000-Lb. Toyotas • AIR COMPRESSORS – Plus Much More!

To Register For This Auction & Terms of Sale, Please Visit www.kosterindustries.com